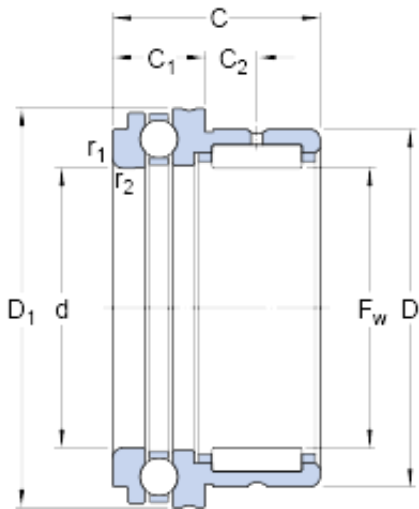




## BEARING-MALAYSIA SDN.BHD.



NKX 12 Bearing 2D drawings and 3D CAD models

### SKF NKX 12 cylindrical roller bearings

Bearing No. NKX 12

Size	21x12x23 mm
Bore Diameter	21 mm
Outer Diameter	12 mm
Width	23 mm
$F_w$	12 mm
D	21 mm
C	23 mm
$C_1$	9 mm
$C_2$	6.5 mm
d	12 mm
$D_1$	26.1 mm
$r_{1,2}$ - min.	0.3 mm
$d_a$ - min.	21.7 mm
$r_a$ - max.	0.3 mm
$r_b$ - max.	0.3 mm
$d_i$	9 mm
F	12 mm
$B_i$	16 mm
Basic dynamic load rating, radial direction - C	9.1 kN
Basic static load rating, radial direction - $C_0$	12 kN
Basic dynamic load rating, axial direction - C	10.4 kN
Basic static load rating, axial direction - $C_0$	16.6 kN



## BEARING-MALAYSIA SDN.BHD.

Fatigue load limit, radial direction - $P_u$	1.4 kN
Fatigue load limit, axial direction - $P_u$	0.62 kN
Reference speed	9000 r/min
Limiting speed	13000 r/min
Mass bearing	0.038 kg
Category	Bearings
Inventory	0.0
Manufacturer Name	SKF
Minimum Buy Quantity	N/A
Weight / Kilogram	0
Product Group	B04144
$F_w$	12 mm
$C_1$	9 mm
$C_2$	6.5 mm
$D_1$	26.1 mm
$r_{1,2}$ min.	0.3 mm
$d_a$ min.	21.7 mm
$r_a$ max.	0.3 mm
$r_b$ max.	0.3 mm
$d_i$	9 mm
$B_i$	16 mm
Basic dynamic load rating, radial direction C	9.13 kN
Basic static load rating, radial direction $C_0$	12 kN
Basic dynamic load rating, axial direction C	10.4 kN
Basic static load rating, axial direction $C_0$	16.6 kN
Fatigue load limit, radial direction $P_u$	1.43 kN
Fatigue load limit, axial	0.62 kN



## BEARING-MALAYSIA SDN.BHD.

direction $P_u$	
Minimum axial load factor A	0.0014
Inner ring	IR 9x12x16